



 **SWALLOW**

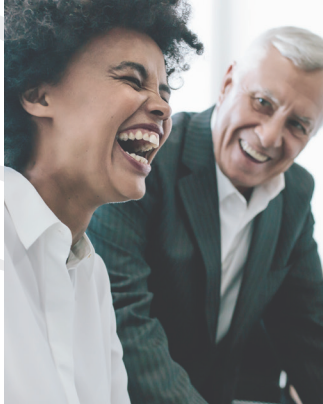
**SilverPlug**<sup>®</sup>



The smartest  
tool to seal any  
implant tunnel



**SilverPlug**<sup>®</sup> IS THE ONLY MEDICAL DEVICE IN THE WORLD  
CERTIFIED FOR FILLING THE IMPLANT SCREW TUNNEL.



A box contains 20 SilverPlug® and 20 stickers to be used on implant passports to certify the use of the product.



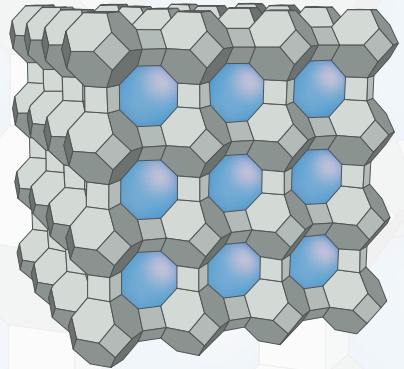
# What is **SilverPlug®**?

**SilverPlug®** was born in 2012 from the intuition of Dr. Matteo Antonini, Specialist in Oral Surgery and Implantology, in collaboration with the Swiss pharmaceutical company Documedita SA.

**SilverPlug®** is a class IIA **medical device** and is the only material in the world certified for the specific use as a **sealant for the screw tunnel of any type of dental implant**.

**SilverPlug®** is made up of a polymer containing **Silver Zeolyte**, a natural antibacterial which protects it from bacterial aggression: it physically occupies the internal volume of the tunnel, drastically reducing the percentage of anaerobic bacteria inside, one of the **main causes of peri-implantitis**.  
Does not release silver into the body.

**SilverPlug®** is easy to apply and remove and does not change size over time



Nanoporous structure  
of Silver Zeolite

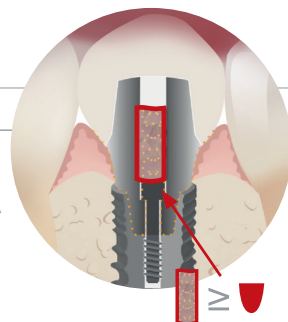
# Why use SilverPlug®?

Commonly used filling materials, which are **not Class IIA CERTIFIED** (provisional cement, cotton pellets, gutta percha, Teflon or wax), create an environment where temperature, nutrition and anaerobic conditions are ideal for harmful anaerobic bacteria proliferation. These colonies of bacteria occupy a **bigger volume than the deepest possible periodontal pocket**.

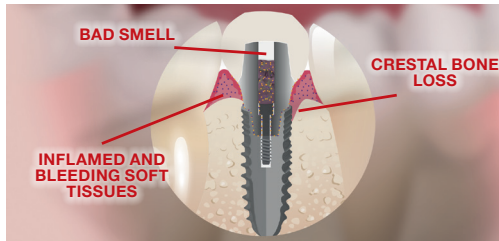
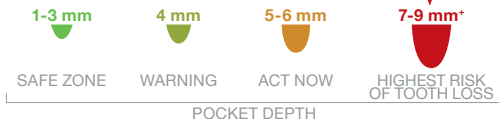
As a result, for EVERY placed implant, with different degrees of intensity, these phenomena tend to be observed:

- Crestal bone loss
- Inflamed and bleeding soft tissues
- Bad smell

## IMPLANT SCREW TUNNEL



## PERIODONTAL POCKETS



# Advantages of **SilverPlug®**



**Prevents Doctors, Clinics and Medical Administrations from any legal implication with the current legislation (UE 2017/745 Regulation – MDR), Patients and Health Insurance, due to malpractice deriving from the use of inappropriate filling materials.**

Allows **not to interrupt the product traceability** and certification of the whole implant-prosthetics treatment.

Favours **healthier tissues in the implant area:** pink gums, no bad smell, contained risk of bone loss.

Helps the Dentist to eliminate the effects of internal micro-leakage, one of the major **causes of mucositis and peri-implantitis** which could not be controlled before the introduction of **SilverPlug®**.



# How to use **SilverPlug**<sup>®</sup>?

Its **tronco-conical shape** allows a perfect fitting for any tunnel diameter on screw retained crowns, abutments and Toronto bridges.

**Compatible** with any implant system.

**Solid and easy to manipulate**, insert in and remove from the tunnel.

**Any type of composite**, temporary or definitive cement can be applied for finishing.

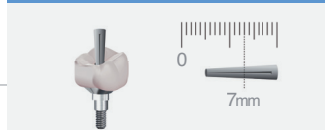
INSTRUCTIONS FOR USE



1. Platform disinfection



2. Abutment disinfection



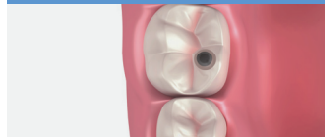
3. Measurement



4. Cut



5. Insertion



6. Check



7. Sealing

# They say about **SilverPlug®**

---



**Dott. Prof. Giulio Rasperini**

Associate Professor in Periodontology,  
University of Milan. Italy.

*"A smart innovative tool, very useful to reduce the risks of peri-implant soft tissues inflammation. Easy to place and to remove. For everyday use."*



**Dr. Pedro Peña**

Implantologist & Lecturer. Spain.

*"Since I have been using SilverPlug® on my patients, the clinical results have changed radically. Gums are healthy and problems have been drastically reduced."*



**Dr. Jan Willem Vaartjes**

Past President of The Netherlands Dental Association (ANT). The Netherlands.

*"SilverPlug® helps me to keep my screw-retained suprastructures clean. Not using it, feels like driving a car without airbag".*



**Dr. Robert Oretti**

President of the British Academy of Aesthetic Dentistry (BAAD). UK.

*"SilverPlug® is a great addition in our armamentarium as a truly antibacterial device within the access chamber. A great innovation for dentists and a major benefit for our patients".*



**SILVERAID**  
TOTAL IMPLANT CARE

**Silveraid s.r.l.**  
*Via R. Lepetit 34 - 21040 Gerenzano (VA) Italy*  
**[www.silveraid.it](http://www.silveraid.it) - [sales@silveraid.it](mailto:sales@silveraid.it)**

 **SWALLOW**

**Tel. 01535 656312**  
**[sales@swallowdental.co.uk](mailto:sales@swallowdental.co.uk)**  
**[www.swallowdental.co.uk](http://www.swallowdental.co.uk)**

**Become a part of our community**



[silveraid\\_dental](#)



[SilverAid](#)



[SilverAid S.r.l.](#)



[SilverAid](#)

**ATTENTION:** SILVERPLUG® is intended to be used only by trained medical personnel.